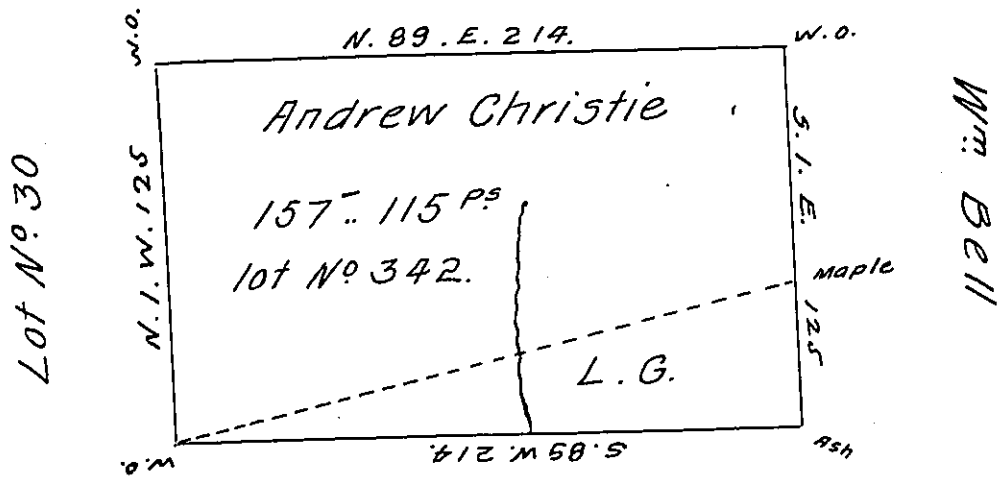


Lot No 21



Lot No 343  
Levi Gibson

Draft of a tract of land Situate in Parker township Butler County on the Waters of Slippery rock - in the Second Donation District. Containing one hundred fifty Seven Acres one hundred and fifteen perches being an undrawn Lot No 342. Surveyd for Andrew Christie on the 6<sup>th</sup> of May 1825. by Virtue of his improvement Actual Settlement and residence, the part within the dotted line marked L.G. is disputed by Levi Gibson. it may be that the Maple is the original Corner. but I am not certain it being down. nor no line marked along the dotted line. there is marks along the black line from Corner to Corner. Betwixt Gibson and Christie the age is about twenty <sup>two</sup> years the ash was not marked for a Corner until I ran the Lines &c &c.

Gov! Heister Esq: -

Hugh Conway D.S.

Jan<sup>y</sup> the 5<sup>th</sup> 1826

IN TESTIMONY that the above is a copy of the original remaining on file in the Department of Internal Affairs of Pennsylvania, made conformably to an Act of Assembly approved the 16th day of February, 1833, I have hereunto set my Hand and caused the Seal of said Department to be affixed at Harrisburg, this first day of August 1907

*Henry Howard*  
Secretary of Internal Affairs.